



## SPRING RETURN HANDLE (DEADMAN HANDLE)

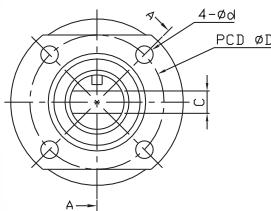
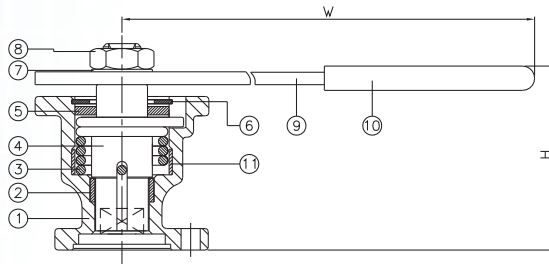
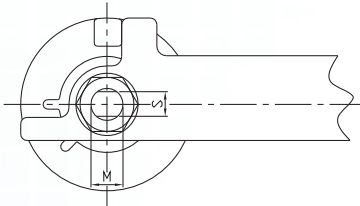
The spring return handles also known as “dead mans” handles, the function in this case is always that the valve is (spring) return to closed position when the handle will be released.



### FEATURES

- Size : 1/2"~2" (DN15~DN50)

This handle is designed to mount upon the ISO 5211 direct mounting pad and only suitable for HAITIMA valves **2011KM / 2012KM / 2013KM / 2013KB / 2013KC**



ITEM	PARTS	MATERIAL
1	BODY	ASTM A351-CF8
2	PACKING	PEEK
3	SPRING	65Mn
4	STEM	AISI 304
5	FLAT WASHER	
6	CIRCLIPS FOR SHAFTS	
7	SPRING WASHER	
8	NUT	
9	HANDLE	PVC
10	HANDLE SLEEVE	
11	THRUST WASHER	PTFE

Maximum output torque:

\* DN15-DN20: 5 N.M (44.25lb-in)

\* DN25-DN32: 11 N.M (97.36lb-in)

\* DN40-DN50: 17 N.M (150.46lb-in)

DN	H	W	S	C	d	D	M
15-20	58	196	8	5.7	6	36	7/16"-20UNF
25-32	67.5	196	8	7.5	6.5	42	7/16"-20UNF
40-50	86.5	245	9.5	8.6	7	50	9/16"-18NUF

unit:mm

NPS	H	W	S	C	d	D	M
1/2"-3/4"	2.28	7.72	0.31	0.22	0.24	1.42	7/16"-20UNF
1"-1-1/4"	2.66	7.72	0.31	0.3	0.26	1.65	7/16"-20UNF
1-1/2"-2"	3.41	9.65	0.37	0.34	0.28	1.97	9/16"-18NUF

unit:in