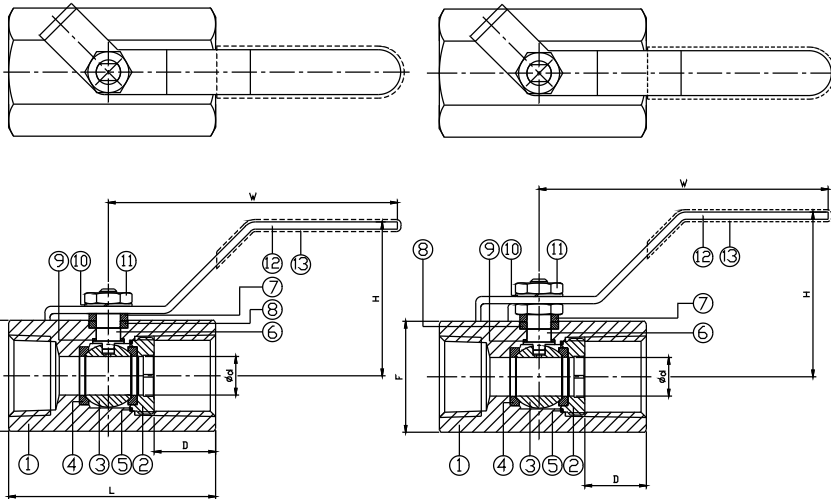




FEATURES

- Reduced port, 1/4"~2" (DN8~DN50)
- W.P. : 2000 WOG (PN150)
- W.T. : -20°C~200°C (-4°F~392°F)
- **Forged body**
- Blow-out proof stem
- Anti-static device (option)
- NACE MR0175
- Thread type : ASTM B1.20.1 (NPT)
DIN2999 & BS21
ISO228/1 & ISO7/1



1/4"~1/2"

3/4"~2"

ITEM	PARTS	MATERIAL
1	BODY	ASTM A105
2	SEAT RETAINER	
3	BALL	ASTM A351-CF8
4	SEAT	RTFE
5	GASKET	PTFE
6	STEM	ASTM A351-CF8
7	GLAND RING	AISI 304
8	PACKING	PTFE
9	THRUST WASHER	RTFE
10	SPRING WASHER	AISI 304
11	NUT	
12	HANDLE	AISI 201
13	HANDLE SLEEVE	PVC

DN	d	L	W	H	D	F
8	5	43.2	66.7	31.8	12	21
10	7	47.2	66.7	33.9	12.2	25.4
15	9.2	62.5	118	55.5	17.4	30
20	12.5	69.9	118	59	22.3	36
25	16	85.9	120	65.4	25.5	46
32	20	93.7	146	74	27.8	55
40	24.5	101.6	146	78.7	29.6	61
50	32	114.3	152	120	29.4	75

unit:mm

NPS	d	L	W	H	D	F
1/4"	0.2	1.7	2.63	1.25	0.47	0.83
3/8"	0.28	1.86	2.63	1.33	0.48	1
1/2"	0.36	2.46	4.65	2.19	0.69	1.18
3/4"	0.49	2.75	4.65	2.32	0.88	1.42
1"	0.63	3.38	4.72	2.57	1	1.81
1-1/4"	0.79	3.69	5.75	2.91	1.09	2.17
1-1/2"	0.96	4	5.75	3.1	1.17	2.4
2"	1.26	4.5	5.98	4.72	1.16	2.95

unit:in



8F., No.201, Sec. 2, Tiding Blvd., Neihu District, Taipei City 114, Taiwan R.O.C.

TEL: +886-2-26585800

FAX: +886-2-26582266 / 27997766