



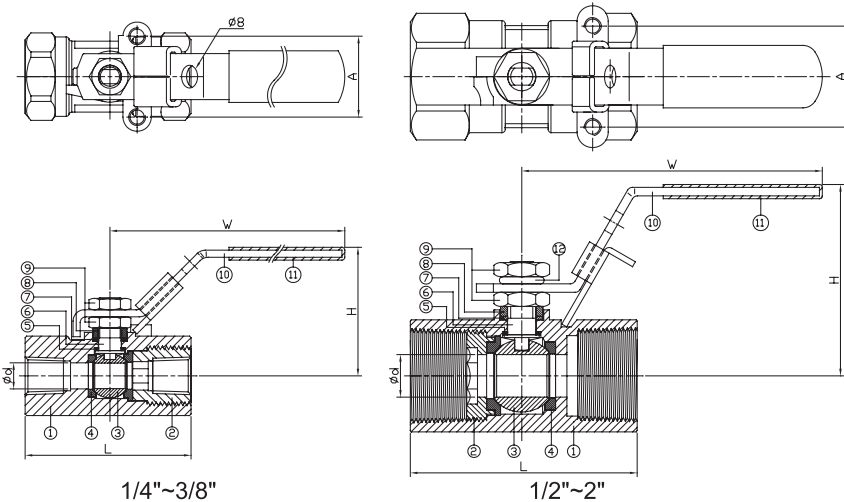
# 1-PC. SCREWED END BALL VALVE

# 2017BM



## FEATURES

- Reduced port, 1/2"~2" (DN15~DN50)
- W.P. : 2000 WOG (PN150)
- W.T. : -20°C~200°C (-4°F~392°F)
- Investment casting
- Blow-out proof stem
- Anti-static device (option)
- Locking device
- Tapped & drilled mounting pad (option)
- Thread type : ASME B1.20.1 (NPT)  
DIN2999 & BS21  
ISO7/1 & EN10226



ITEM	PARTS	MATERIAL	
1	BODY	ASTM A351-CF8M	ASTM A216-WCB
2	RETAINER		
3	BALL	ASTM A351-CF8M	
4	SEAT	RTFE / PTFE	
5	THRUST WASHER	PTFE	
6	STEM	ASTM A276-316	
7	PACKING	PTFE	
8	GLAND RING	AISI 304	
9	NUT		
10	HANDLE		
11	HANDLE SLEEVE	PVC	
12	SPRING WASHER	AISI 304	

DN	d	L	H	W	A
8	9	58.5	45.8	110	28.5
10	9	58.5	45.8	110	28.5
15	9	66	57.9	105	28.5
20	12.5	70	60.9	105	28.2
25	15	80	63.8	113	35.6
32	20	95	70.3	113	35.6
40	25	101	72.3	160	35.6
50	32	114	78.3	160	35.6

unit:mm

NPS	d	L	H	W	A
1/4"	0.35	2.3	1.8	4.33	1.12
3/8"	0.35	2.3	1.8	4.33	1.12
1/2"	0.35	2.6	2.28	4.13	1.12
3/4"	0.49	2.76	2.4	4.13	1.11
1"	0.59	3.15	2.51	4.45	1.4
1-1/4"	0.79	3.74	2.77	4.45	1.4
1-1/2"	0.98	3.98	2.85	6.3	1.4
2"	1.26	4.49	3.08	6.3	1.4

unit:in