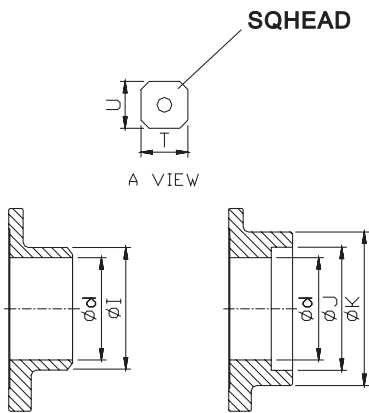
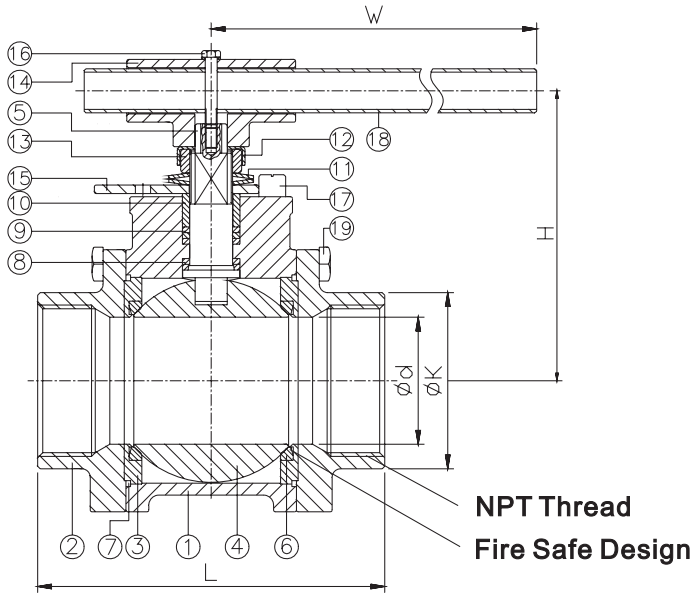
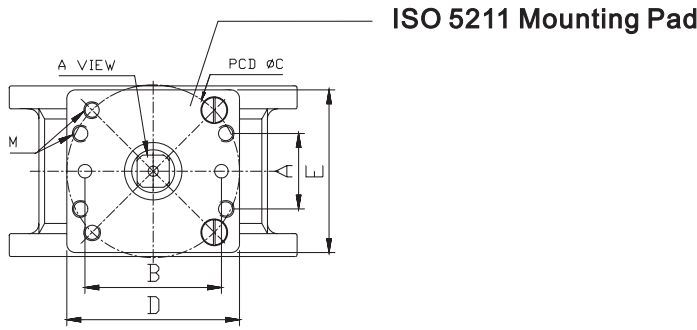




3-PC. SCREWED END BALL VALVE

2013KM



PERFORMANCE DATA

VALVE SIZE	APPROXIMATE FLOW COEFF. CV
1/2"	5
3/4"	21
1"	44
1-1/4"	64
1-1/2"	87
2"	210
2-1/2"	277
3"	482
4"	1001

unit: US gal/min

ITEM	PARTS	MATERIAL	
1	BODY	ASTM A351-CF8M	ASTM A216-WCB
2	CAP	ASTM A351-CF8M	
3	RETAINER	ASTM A351-CF8M	
4	BALL	ASTM A276-316	
5	STEM	PTFE / RTFE / CTFE / TFM 1600	
6	SEAT	GRAPHITE	
7	SEAL	CTFE	
8	THRUST WASHER	GRAPHITE	
9	PACKING	AISI 304	
10	GLAND RING	AISI 301	
11	BELLEVILLE WASHER	ASTM A167-304	
12	LOCKING WASHER	ASTM A194-8A	
13	STEM NUT		
14	WRENCH BLOCK		
15	LOCKING PAD		
16	HEX HESD BOLT	AISI 304	
17	STOP PIN		
18	HANDLE		
19	BOLT	ASTM A193-B8A	
20	NUT	ASTM A194-8A	
21	HANDLE SLEEVE	PVC	

Butt Weld End

Socket Weld End

DN	d	I	J	K	L	H	H1	H2	W	C	A	B	E	D	M	T	U	ISO 5211	Torque (N-M)
65	64	74	74	92	184.6	133.9	42.5	15	222.5	70	32	64	70	85	M8*1.25	14	M20*2.5	F07	53.5
80	75	90	90	104	204	172.1	46.4	17.5	344	102	44.5	80.6	96	102	M10*1.5	19	1"-14UNF	F10	111.5
100	96	118	115.5	136	240	185.5	47	17.5	344	102	44.5	80.6	96	102	M10*1.5	19	1"-14UNF	F10	114

unit:mm

NPS	d	I	J	K	L	H	H1	H2	W	C	A	B	E	D	M	T	U	ISO 5211	Torque (N-M)
2-1/2"	2.52	2.91	2.91	3.62	7.27	5.27	1.67	0.59	8.76	2.76	1.26	2.52	2.76	3.35	M8*1.25	0.55	M20*2.5	F07	473.6
3"	2.95	3.54	3.54	4.09	8.03	6.78	1.83	0.69	13.54	4.02	1.75	3.17	3.78	4.02	M10*1.5	0.75	1"-14UNF	F10	986.9
4"	3.78	4.65	4.55	5.35	9.45	7.3	1.85	0.69	13.54	4.02	1.75	3.17	3.78	4.02	M10*1.5	0.75	1"-14UNF	F10	1009

unit:in