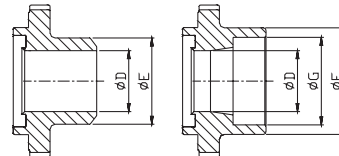
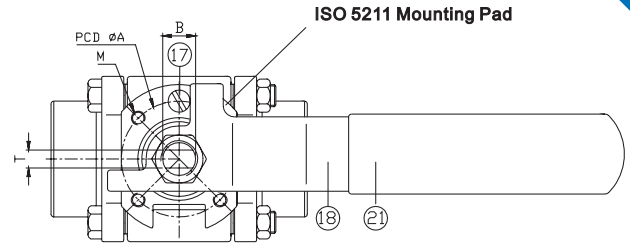
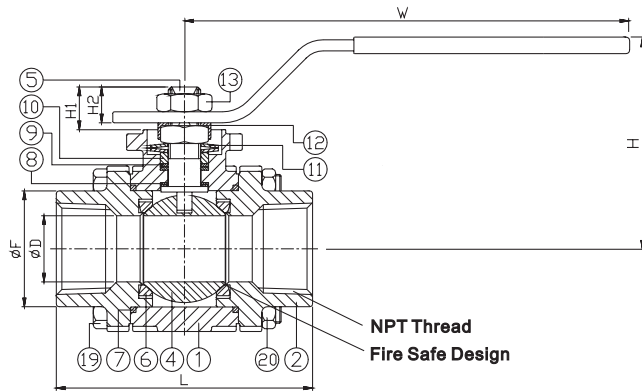




# 3-PC. SCREWED END BALL VALVE

# 2013KM



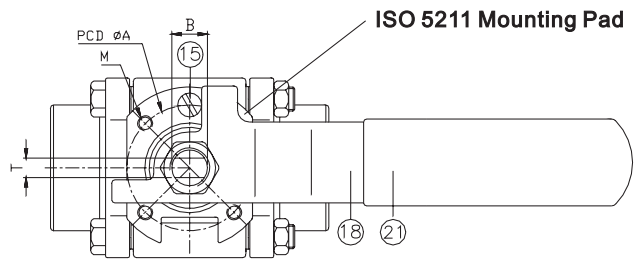
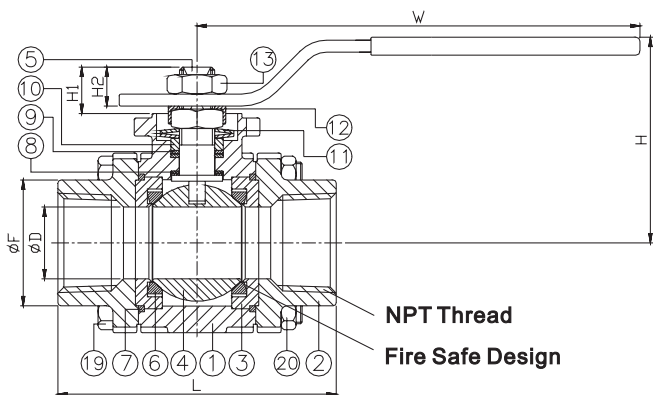
Butt Weld End      Socket Weld End

DN	D	E	F	G	L	H	H1	H2	W	T	A	ISO 5211	M	S	Torque (N-M)
8	8	13.5	25	14	65.7	57	12.1	9.8	113.5	5.7	36	F03	M5*0.8	3/8"-24UNF	3.8
10	10	17.5	25	18	65.7	57	12.1	9.8	113.5	5.7	36	F03	M5*0.8	3/8"-24UNF	3.8
15	15	23.3	30.3	22	74.8	57	12.1	9.8	113.5	5.7	36	F03	M5*0.8	3/8"-24UNF	3.8
20	20	28.7	36	27.5	80.2	59.7	14.5	10.6	113.5	5.7	36	F03	M5*0.8	3/8"-24UNF	5.1

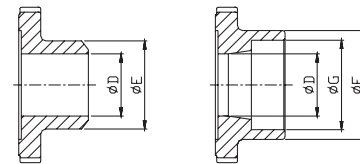
unit:mm

NPS	D	E	F	G	L	H	H1	H2	W	T	A	ISO 5211	M	S	Torque (in-lb)
1/4"	0.31	0.53	0.98	0.55	2.59	2.24	0.48	0.39	4.47	0.22	1.42	F03	M5*0.8	3/8"-24UNF	33.8
3/8"	0.39	0.69	0.98	0.71	2.59	2.24	0.48	0.39	4.47	0.22	1.42	F03	M5*0.8	3/8"-24UNF	33.8
1/2"	0.59	0.92	1.19	0.87	2.94	2.24	0.48	0.39	4.47	0.22	1.42	F03	M5*0.8	3/8"-24UNF	33.8
3/4"	0.79	1.13	1.42	1.08	3.16	2.35	0.57	0.42	4.47	0.22	1.42	F03	M5*0.8	3/8"-24UNF	45.1

unit:in



Stem arrangement for actuator valves.



Butt Weld End      Socket Weld End

DN	D	E	F	G	L	H	H1	H2	W	T	A	ISO 5211	M	S	Torque (N-M)
25	24	34.8	44.8	34.5	93	81.5	15.5	14	146	7.5	42	F04	M5*0.8	7/16"-20UNF	10.2
32	30	42.6	54	43	110.6	85.9	15.5	15	146	7.5	42	F04	M5*0.8	7/16"-20UNF	15.9
40	38	50	62	49	122.6	96.7	27.3	18.7	180	8.6	50	F05	M6*1.0	9/16"-18UNF	21
50	50	63.7	76	61.2	140	104.9	28.1	19	180	8.6	50	F05	M6*1.0	9/16"-18UNF	32.1

unit:mm

NPS	D	E	F	G	L	H	H1	H2	W	T	A	ISO 5211	M	S	Torque (in-lb)
1"	0.94	1.37	1.76	1.36	3.66	3.21	0.61	0.55	5.75	0.3	1.65	F04	M5*0.8	7/16"-20UNF	90.2
1-1/4"	1.18	1.68	2.13	1.69	4.35	3.38	0.61	0.59	5.75	0.3	1.65	F04	M5*0.8	7/16"-20UNF	141
1-1/2"	1.5	1.97	2.44	1.93	4.83	3.81	1.07	0.74	7.09	0.34	1.97	F05	M6*1.0	9/16"-18UNF	186
2"	1.97	2.51	2.99	2.41	5.51	4.13	1.11	0.75	7.09	0.34	1.97	F05	M6*1.0	9/16"-18UNF	284.1

unit:in

