



# HIGH PURITY BALL VALVE

# 2013KB

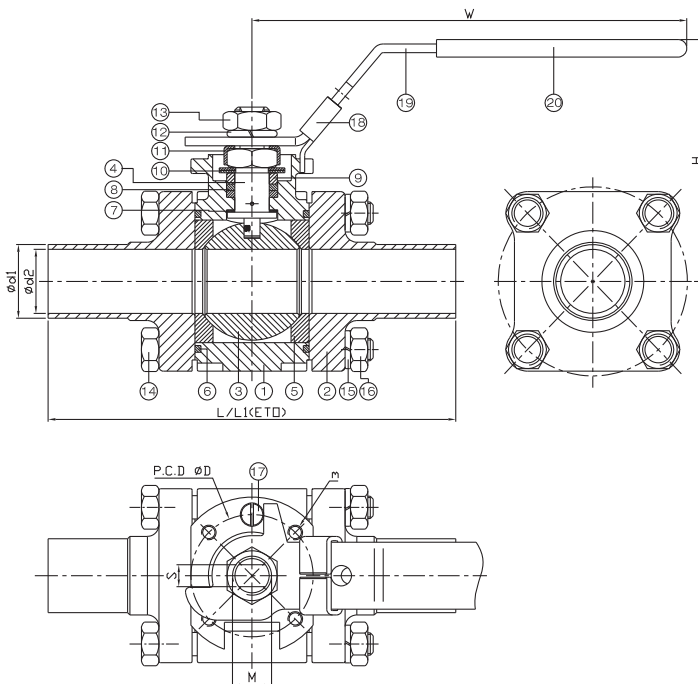


## FEATURES

- Tube port, 1/2"~2" (DN15~DN50)
- Body W.P. : 1000 WOG (PN63)
- Tube End W.P. : 200 WOG
- W.T. : -20°C~200°C (-4°F~392°F)
- Investment casting
- Blow-out proof stem
- Live-loading design
- Anti-static device (option)
- Cavity filled seats (option)
- Locking device
- ISO 5211 Mounting pad

### 2013KB-BPE

- Tube end castings have low sulphur content of 0.005-0.017%
- Extended tube end (ETO)



ITEM	PARTS	MATERIAL
1	BODY	ASTM A351-CF3M
2	CAP	
3	BALL	
4	STEM	ASTM A276-316L
5	SEAT	PTFE / TFM1600
6	SEAL	PTFE
7	THRUST WASHER	
8	PACKING	AISI 304
9	GLAND RING	
10	BELLEVILLE WASHER	AISI 301
11	LOCKING WASHER	AISI 304
12	STEM WASHER	
13	STEM NUT	
14	BOLT	
15	BOLT WASHER	
16	NUT	
17	STOP PIN	
18	LOCKING DEVICE	
19	HANDLE	
20	HANDLE SLEEVE	

DN	L	L1	H	W	d1	d2	D	m	M	S	ISO5211	Torque (N-M)	
												Breakaway	Action
15	66.2	118	53.5	114	12.7	9.4	36	M5	3/8"-24UNF	5.7	F03	4.52	3.39
20	76.9	124	55	114	19.05	15.75	36	M5	3/8"-24UNF	5.7	F03	4.52	3.95
25	103	141	66	146	25.4	22.1	42	M5	7/6"-20UNF	7.5	F04	4.52	3.95
32	110	-	71	146	31.75	28.45	42	M5	7/6"-20UNF	7.5	F04	7.91	5.65
40	139.5	157	81	178	38.1	34.8	50	M6	9/16"-18UNF	8.6	F05	28.25	19.21
50	158.7	172	89.5	178	50.8	47.5	50	M6	9/16"-18UNF	8.6	F05	28.25	19.21

unit:mm

NPS	L	L1	H	W	d1	d2	D	m	M	S	ISO5211	Torque (IN-LB)	
												Breakaway	Action
1/2"	0.97	4.65	2.11	4.49	0.5	0.37	1.42	M5	3/8"-24UNF	0.23	F03	40	30
3/4"	1.06	4.89	2.17	4.49	0.75	0.62	1.42	M5	3/8"-24UNF	0.2	F03	40	35
1"	1.55	5.56	2.6	5.75	1	0.87	1.66	M5	7/6"-20UNF	0.3	F04	40	35
1-1/4"	4.33	-	2.8	5.75	1.25	1.12	1.65	M5	7/6"-20UNF	0.3	F04	70	50
1-1/2"	2.13	6.19	3.19	7.01	1.5	1.37	1.97	M6	9/16"-18UNF	0.34	F05	250	170
2"	2.66	6.78	3.53	7.01	2	1.87	1.97	M6	9/16"-18UNF	0.34	F05	250	170

unit:in



8F., No.201, Sec. 2, Tiding Blvd., Neihu District, Taipei City 114, Taiwan R.O.C.  
 TEL: +886-2-26585800 FAX: +886-2-26582266 / 27997766

[Http://www.haitima.com.tw](http://www.haitima.com.tw)  
 Email: [haitima@seed.net.tw](mailto:haitima@seed.net.tw)