



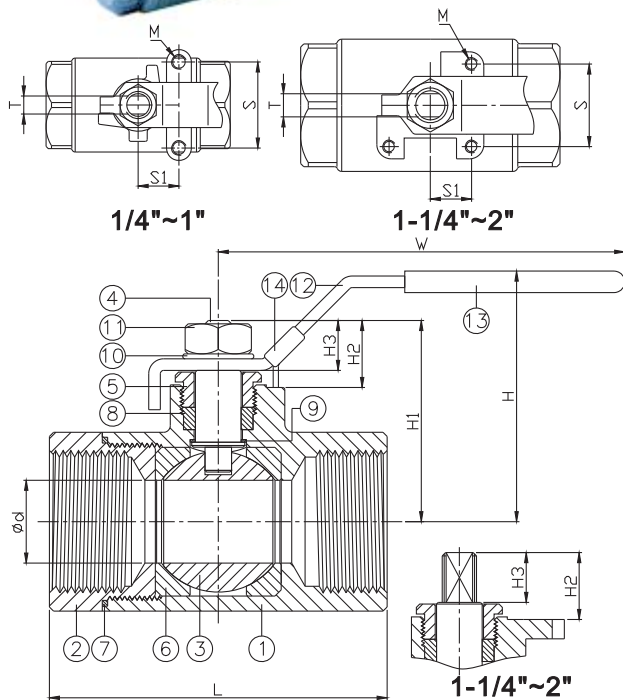
2-PC. SCREWED END BALL VALVE

2007A



FEATURES

- Standard port
- W.P. : 1/4"~1" - 2000 WOG (PN150)
1-1/4"~2" - 1500 WOG (PN100)
- W.T. : -20°C~200°C (-4°F~392°F)
- Investment casting
- Blow-out proof stem
- Anti-static device (option)
- Locking device
- Tapped & drilled mounting pad
- Thread type : ASME B1.20.1 (NPT)
DIN2999 & BS21
ISO228/1 & ISO7/1



ITEM	PARTS	MATERIAL	
1	BODY	ASTM A351-CF8M	ASTM A216-WCB
2	CAP		
3	BALL	ASTM A351-CF8M	
4	STEM	ASTM A276-316	
5	GLAND NUT	AISI 304	
6	SEAT	RTFE	
7	SEAL	PTFE	
8	PACKING	PTFE	
9	THRUST WASHER	AISI 304	
10	SPRING WASHER	AISI 304	
11	NUT	AISI 304	
12	HANDLE	PVC	
13	HANDLE SLEEVE	PVC	
14	LOCKING DEVICE	AISI 304	

DN	d	L	W	H	H1	H2	H3	S1	S	M	T	Torque (N-M)	Weight (kg)
8	11.1	56.8	113	52.3	42	17.8	12	12.5	28.2	M5	5.5	3.6	0.35
10	12.7	56.8	113	52.3	42	17.8	12	12.5	28.2	M5	5.5	3.6	0.35
15	12.7	59.7	113	52.3	42	17.8	12	12.5	28.2	M5	5.5	3.6	0.35
20	17.5	79.6	124.5	59.8	52.8	22.8	14.5	22.8	35	M5	6.3	6.8	0.64
25	22.3	85	124.5	62.5	55.5	22.8	14.5	22.8	34.8	M5	6.3	11	0.76
32	25.4	103	141.5	85.4	73.7	30.8	20.6	17.7	35.4	M6	9.5	17.4	1.5
40	31.8	111	141.5	90.2	78.5	31.3	20.6	17.7	35.4	M6	9.5	22.7	1.9
50	38.1	137	183	94.8	85.6	29.1	20.6	17.7	35.4	M6	9.5	39.5	2.7

unit:mm

NPS	d	L	W	H	H1	H2	H3	S1	S	M	T	Torque (in-lb)	Weight (lb)
1/4"	0.44	2.24	4.45	2.06	1.65	0.7	0.47	0.49	1.11	M5	0.22	31.86	0.77
3/8"	0.5	2.24	4.45	2.06	1.65	0.7	0.47	0.49	1.11	M5	0.22	31.86	0.77
1/2"	0.5	2.35	4.45	2.06	1.65	0.7	0.47	0.49	1.11	M5	0.22	31.86	0.77
3/4"	0.69	3.13	4.9	2.35	2.08	0.9	0.57	0.9	1.38	M5	0.25	60.18	1.41
1"	0.88	3.35	4.9	2.46	2.19	0.9	0.57	0.9	1.37	M5	0.25	97.36	1.68
1-1/4"	1	4.06	5.57	3.36	2.9	1.21	0.81	0.7	1.39	M6	0.37	154	3.31
1-1/2"	1.25	4.37	5.57	3.55	3.09	1.23	0.81	0.7	1.39	M6	0.37	200.91	4.19
2"	1.5	5.39	7.2	3.73	3.37	1.15	0.81	0.7	1.39	M6	0.37	349.6	5.95

unit:in



8F., No.201, Sec. 2, Tiding Blvd., Neihu District, Taipei City 114, Taiwan R.O.C.
TEL: +886-2-26585800 FAX: +886-2-26582266 / 27997766

[Http://www.haitima.com.tw](http://www.haitima.com.tw)
Email: haitima@seed.net.tw