



# 2-PC. SCREWED END BALL VALVE

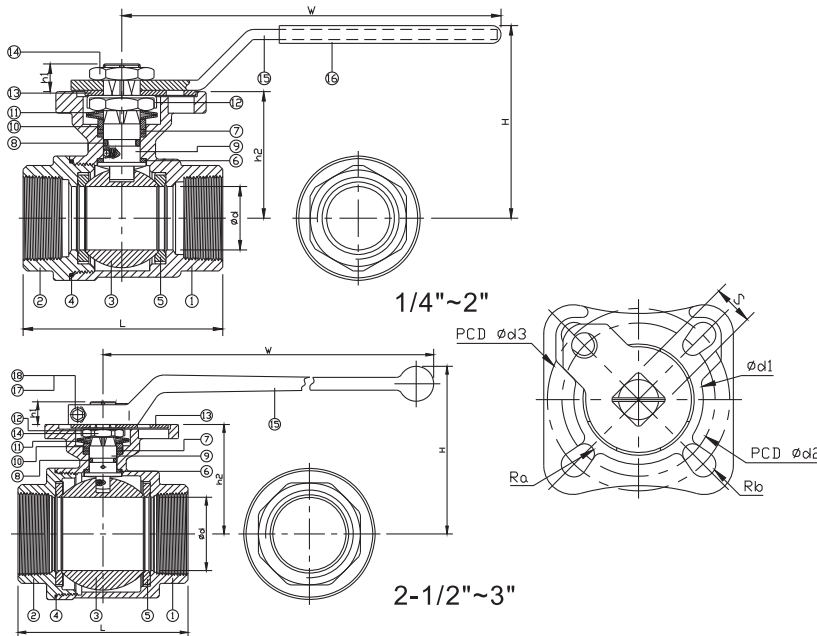
# 2006SD

## ★ ECONOMIC PATTERN



## FEATURES

- Full port, 1/4"~3" (DN8~DN80)
- W.P. : 1000 WOG (PN63)
- W.T. : -20°C~200°C (-4°F~392°F)
- Investment casting
- Blow-out proof stem
- Live-loading device
- Anti-static device
- Locking device
- ISO 5211 Direct mounting pad
- **Automation accessories (option)**
- Thread type : ASME B1.20.1 (NPT)  
DIN2999 & BS21  
ISO228/1 & ISO7/1



ITEM	PARTS	MATERIAL	
1	BODY	ASTM A351-CF8M	ASTM A216-WCB
2	CAP		
3	BALL	ASTM A351-CF8M	
4	SEAL	PTFE	
5	SEAT	PTFE / RTFE	
6	THRUST WASHER	PTFE	
7	PACKING		
8	O-RING	VITON	
9	STEM	ASTM A276-316	
10	GLAND RING	AISI 304	
11	BELLEVILLE WASHER	AISI 301	
12	LOCKING WASHER		
13	LOCKING DEVICE	AISI 304	
14	STEM NUT		
15	HANDLE		
16	HANDLE SLEEVE	PVC	
17	BOLT	AISI 304	
18	NUT		

DN	d	L	H	W	S	h1	h2	d1	d2	d3	Ra	Rb	Torque (N·M)					
8	11.6	58	62	113.5	9	8	36.4	31	36	42	2.75	2.75	5.5					
10	12.7																	
15	15																	
20	20	65.6	65	140	11	9	39.2	35.5	42	50	2.75	3.5	7.5					
25	25	78.7	76			11	48.7						11	54.2	11			
32	32	90	81.5			11	54.2						11	54.2	11			
40	38	105	103	172	14	11.5	65.7	56	50	70	3.5	4.5	20					
50	50	124	111.5										14	75.5	14	75.5	14	40
65	63	146.2	141										14	91.5	14	91.5	14	60
80	76	163.7	150	325	17	20.5	101	76	70	102	4.5	5.5	85					

NPS	d	L	H	W	S	h1	h2	d1	d2	d3	Ra	Rb	Torque (in·lb)							
1/4"	0.46	2.28	2.44	4.47	0.35	0.31	1.43	1.22	1.42	1.65	0.11	0.11	48.68							
3/8"	0.5																			
1/2"	0.59																			
3/4"	0.79	2.58	2.56	5.51	0.43	0.35	1.54	1.4	1.65	1.97	0.11	0.14	66.38							
1"	0.98	3.1	2.99			0.43	1.92						1.4	1.65	1.97	0.11	0.14	97.36		
1-1/4"	1.26	3.54	3.21			0.43	2.13						1.4	1.65	1.97	0.11	0.14	132.76		
1-1/2"	1.5	4.13	4.1	6.77	0.55	0.45	2.59	2.2	1.97	2.76	0.14	0.18	177.01							
2"	1.97	4.88	4.39										0.55	2.97	2.2	1.97	2.76	0.14	0.18	354.03
2-1/2"	2.48	5.76	5.55										0.67	3.6	2.2	1.97	2.76	0.14	0.18	531.04
3"	2.99	6.44	5.91	12.8	0.67	0.81	3.97	2.99	2.76	4.02	0.18	0.22	752.31							

unit : m m

unit : in



8F., No.201, Sec. 2, Tiding Blvd., Neihu District, Taipei City 114, Taiwan R.O.C.  
TEL: +886-2-26585800 FAX: +886-2-26582266 / 27997766

[Http://www.haitima.com.tw](http://www.haitima.com.tw)  
Email: [haitima@seed.net.tw](mailto:haitima@seed.net.tw)