



2-PC. SCREWED END BALL VALVE

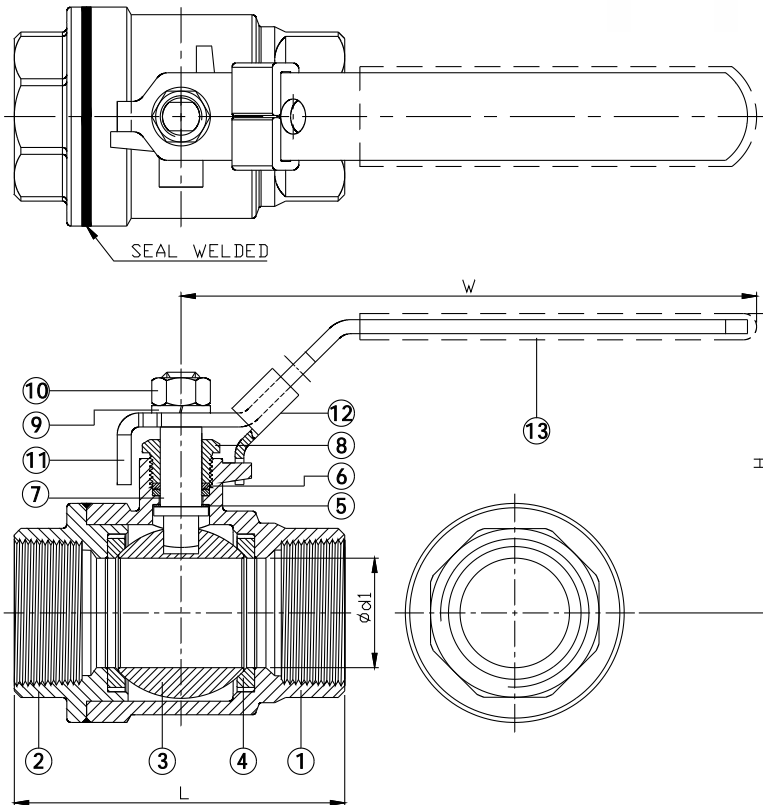
2006SC

★ ECONOMIC PATTERN



FEATURES

- Full port, 1/4"~3" (DN8~DN80)
- W.P. : 1000 WOG (PN63)
- W.T. : -20°C~200°C (-4°F~392°F)
- Investment casting
- Blow-out proof stem
- Locking device
- Seal welded ends (option)
- TA-Luft approved
- Length conform to DIN 3202/4-M3-2006SCM3 (option)
- Thread type : ASTM B1.20.1 (NPT)
DIN2999 & BS21
ISO228/1 & ISO7/1



ITEM	PARTS	MATERIAL	
1	BODY	ASTM A351-CF8M	ASTM A216-WCB
2	CAP		
3	BALL	ASTM A351-CF8M	
4	SEAT	PTFE	
5	THRUST WASHER		
6	PACKING	ASTM A276-316	
7	STEM		
8	GLAND NUT	AISI 304	
9	SPRING WASHER		
10	STEM NUT		
11	HANDLE	PVC	
12	LOCKING DEVICE		
13	HANDLE SLEEVE		

DN	d1	L	H	W	Torque (N-M)	
					Breakaway	Action
8	11.5	50	54	101	5.2	3.9
10	12.5	50	54	101	6.5	3.9
15	15	59	54	101	7.8	3.9
20	20	66	63	124	7.8	5.2
25	25	75.5	74	124	16.9	9.1
32	32	88.7	80	165	22.1	13
40	38	98.5	94	165	24.7	14.3
50	50	120.6	103	183	28.6	17.6
65	63	146.5	137	248	49.4	22.1
80	76	167.5	148	248	52	28.6

unit:mm

NPS	d1	L	H	W	Torque (in-lb)	
					Breakaway	Action
1/4"	0.45	1.97	2.13	3.98	46	34.5
3/8"	0.49	1.97	2.13	3.98	57.5	34.5
1/2"	0.59	2.32	2.13	3.98	69	34.5
3/4"	0.79	2.6	2.48	4.88	69	46
1"	0.98	2.97	2.91	4.88	149.6	80.5
1-1/4"	1.26	3.49	3.15	6.5	195.6	115.1
1-1/2"	1.5	3.88	3.7	6.5	218.6	126.6
2"	1.97	4.75	4.06	7.2	253.1	155.8
2-1/2"	2.48	5.77	5.39	9.76	437.2	195.6
3"	2.99	6.59	5.83	9.76	460.2	253.1

unit:in



8F., No.201, Sec. 2, Tiding Blvd., Neihu District, Taipei City 114, Taiwan R.O.C.

TEL: +886-2-26585800

FAX: +886-2-26582266 / 27997766

[Http://www.haitima.com.tw](http://www.haitima.com.tw)

Email: haitima@seed.net.tw